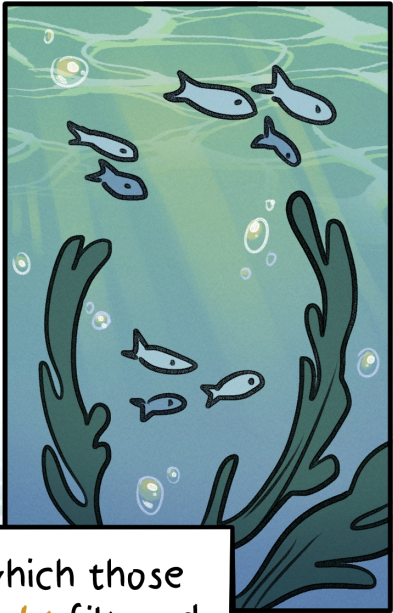


# Heart of the Sea



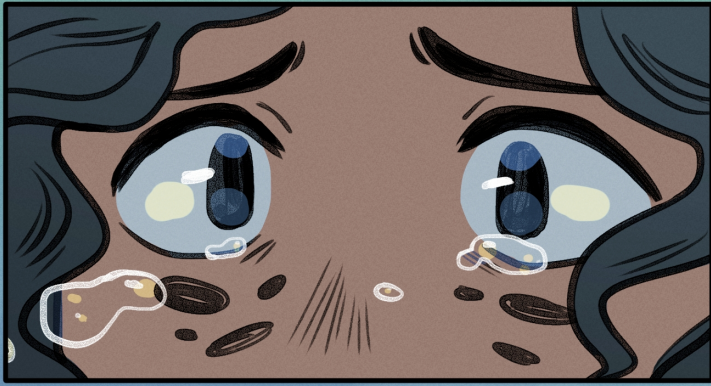
I'd always been curious,  
about the surface-world...





...the place from which those *little drops of sunlight* filtered down to us.



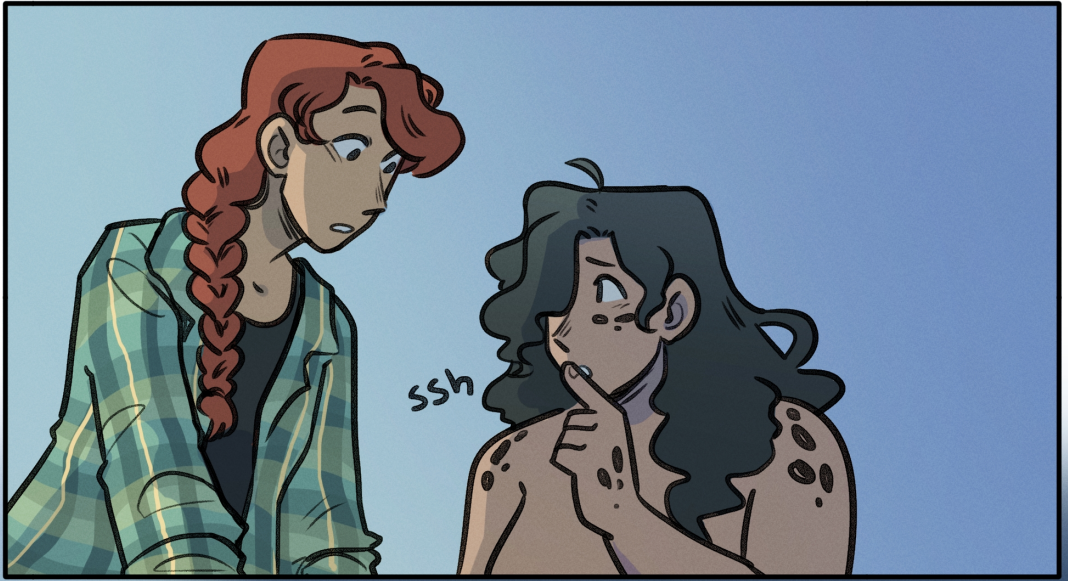


though, I never expected  
to see it like this..



...cast wave-tossed and battered to shore



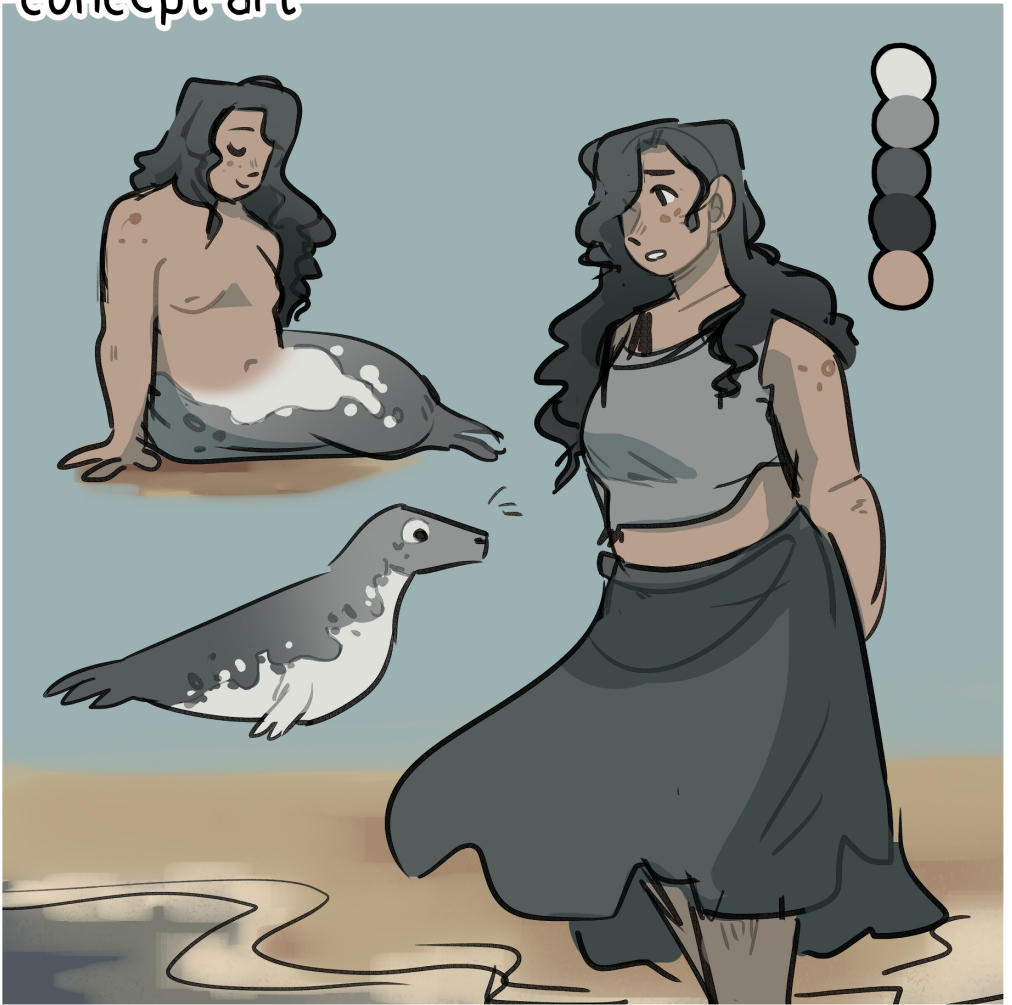


and while the people of the land have been kind to me in the wake of the storm,

I can't help but long to return home.



concept art



thanks for reading!

[snail-legs.co.uk](http://snail-legs.co.uk)